

**FUTUREWAY® LD-PTFE-LS**

Low Shrinkage, Low density ePTFE Tape

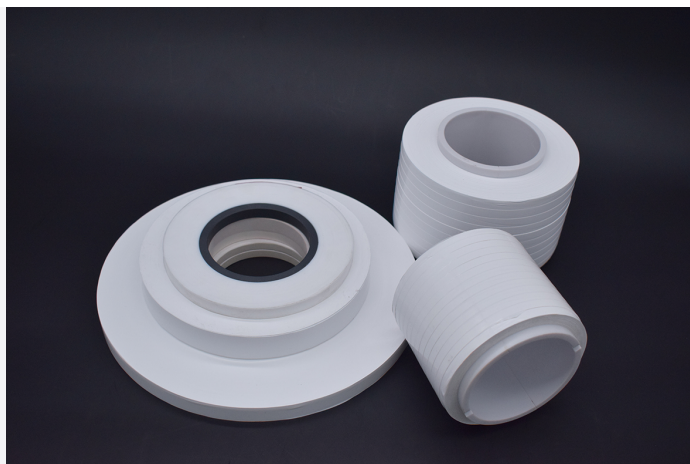
LD-PTFE-LS tapes combine low dielectric constant, fast elastic recovery, high flexural and tensile strength. The dimensional-stability of LD-PTFE-LS is adjustable, offering great opportunity to finely tailor the electromagnetic properties of wire and cables.

**Features and Benefits:**

- Low dielectric constant (1.3 - 1.4)
- Adjustable heat shrink (3 - 30%)
- Resistance to chemical attack
- Tight thickness control
- Up to 1500 m splice-free
- Custom thickness and width

**SHENZHEN FUTUREWAY TECHNOLOGY CO., LTD**

Dedicated to be a material expert for customers



FUTUREWAY® LD-PTFE-LS is ideal for:

- Coaxial cables
- RF cables
- High-speed data cables

PROPERTY	TEST METHOD	VALUE
Density (g/cc)		0.5 - 1.0 ± 0.05
Color		Custom
Thickness (mm/mil)	GB/T 6672-2001	0.051 - 0.254/ 2 - 10
Thickness tolerance (mm)		± 0.005 - ± 0.007
Width (mm)	GB/T 6672-2001	2 - 100
Width tolerance (mm)		± 0.2 (W < 10) ± 0.3 (W > 10)
Tensile Strength (MPa) Machine direction	GB/T1040.3-2006	15 ~ 30
Elongation (%) Machine direction	GB/T1040.3-2006	> 100
Heat Shrinkage (%)	125°C, 6H	3 - 30 (depending on density)
Working temperature (°C)		-200/+200
PACKING SPECIFICATIONS	FLAT PAD	STEP-PACK
Core diameter (mm)	77	77
Roll width (mm)	Tape width	100
Roll diameter (mm)	150 - 350	100 - 250
Roll width tolerance (mm)	± 0.5	± 2
Remarks	W > 10 mm	No flanges
Running length (m)	1500 (Max)	

Store the material in a cool, clean, and dry environment where the temperature should stay under 19 °C at all times.

**Statement:** The information contained in this data sheet is intended to assist you in choice of Futureway materials. It is not intended to and does not create any explicit or implicit warranties, including any warranty of marketability of the goods and for special purposes. It is also not guaranteed that users can achieve the results shown in the TDS in specific applications. They will change with different applications. Users should determine the suitability of Futureway materials for each application.

**SHENZHEN FUTUREWAY TECHNOLOGY CO., LTD**

A: 201, Building 1, No. 86, Xiangyang Road, Yanchuan Community, Yanluo Street, Bao'an District, Shenzhen

E: sales01@szfutureway.com

T: +86 755-23079685

W: www.szfutureway.com